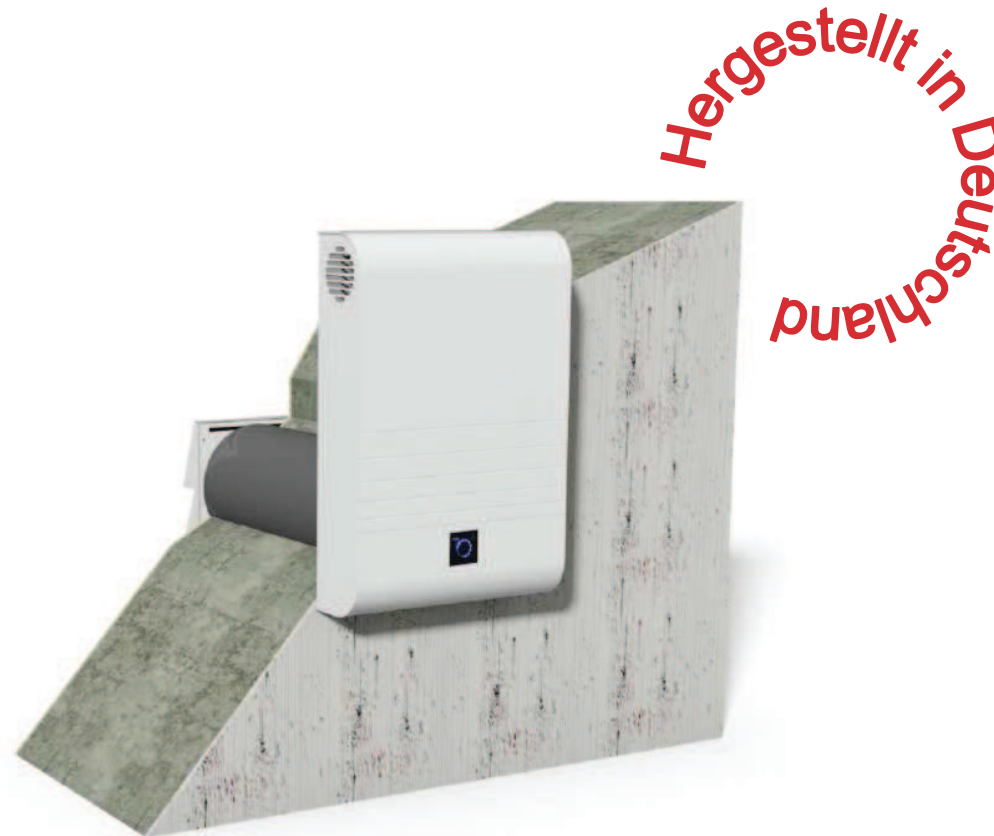


Series ComfoAir 70 / CA70



Series ComfoAir 70 / CA70

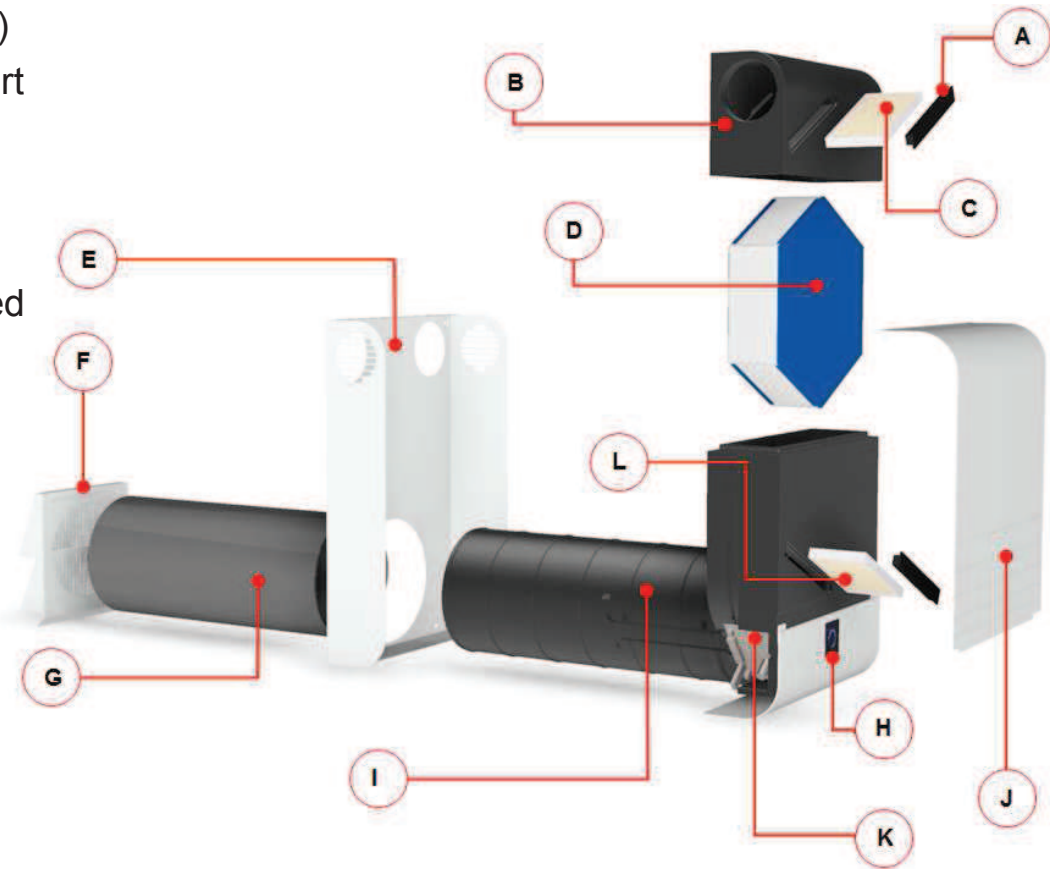
Device



Series ComfoAir 70 / CA70

Main parts

- A** Filter cover made of cellular rubber (2x)
- B** EPP insulated Element of the upper part
- C** Extract air Filter (G3)
- D** Enthalpy exchanger (ERV)
- E** Wall bracket
- F** Combo-external wall grid with integrated protective mesh
- G** Wall-installation tube made of plastic
- H** Lower design aluminium cover hood with integrated control panel
- I** EPP-housing unit with integrated ventilators and flap mechanism
- J** Upper design aluminium cover hood
- K** Control board
- L** Supply air filter (G3 or F7)



Series ComfoAir 70 / CA70

Assembly location

The device is always installed on the outside wall!



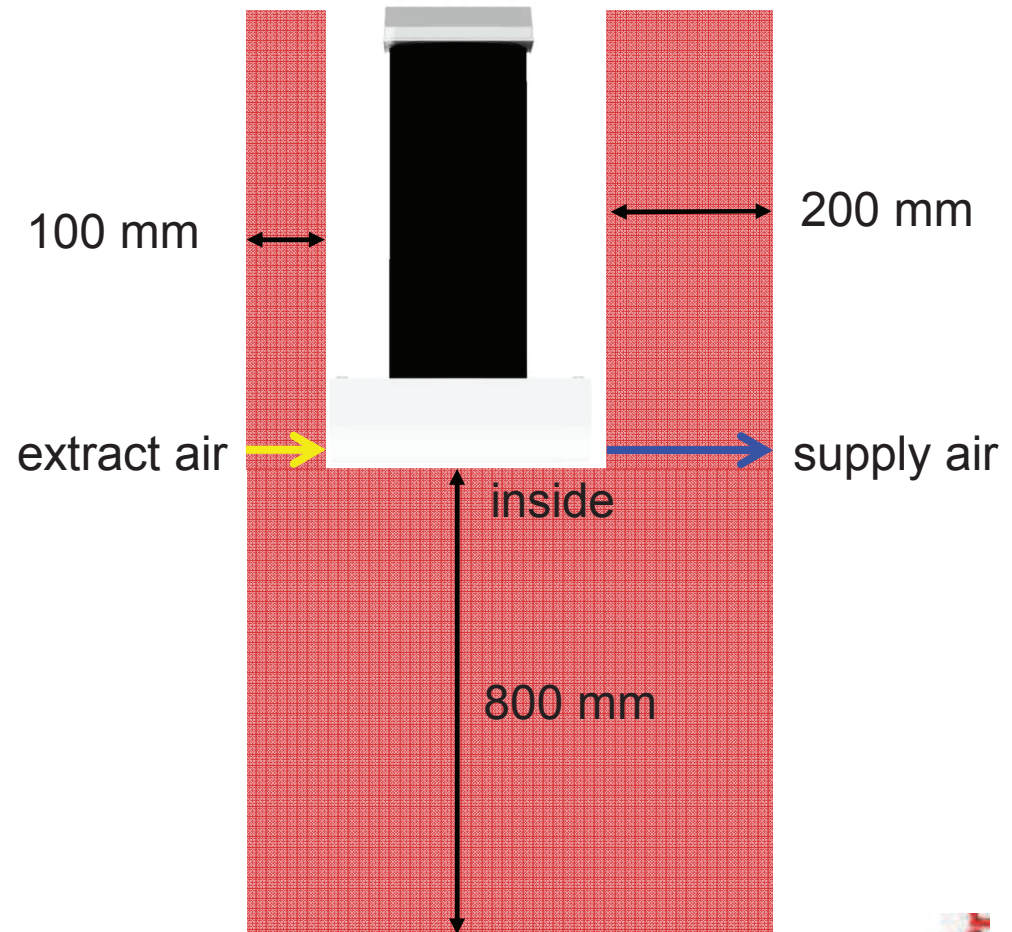
Series ComfoAir 70 / CA70

Installation distance

Installation distance

It is important to ensure that is complied a minimum distance from walls and furniture of

- 200 mm on the supply air side,
- 100 mm on the extract air side and
- 800 mm in front of the device



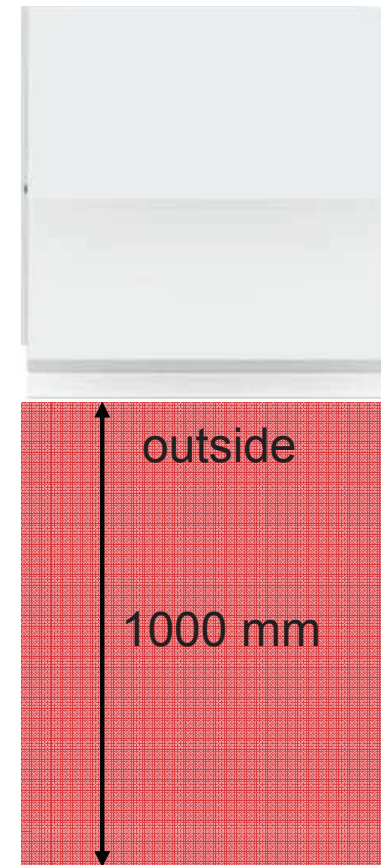
Series ComfoAir 70 / CA70

Installation distance

Installation distance

It is important to ensure that the ground level at least 1000 mm distance has to be maintained.

Exception to this is the basement. Here has to be ensured that no polluted intake air is sucked.

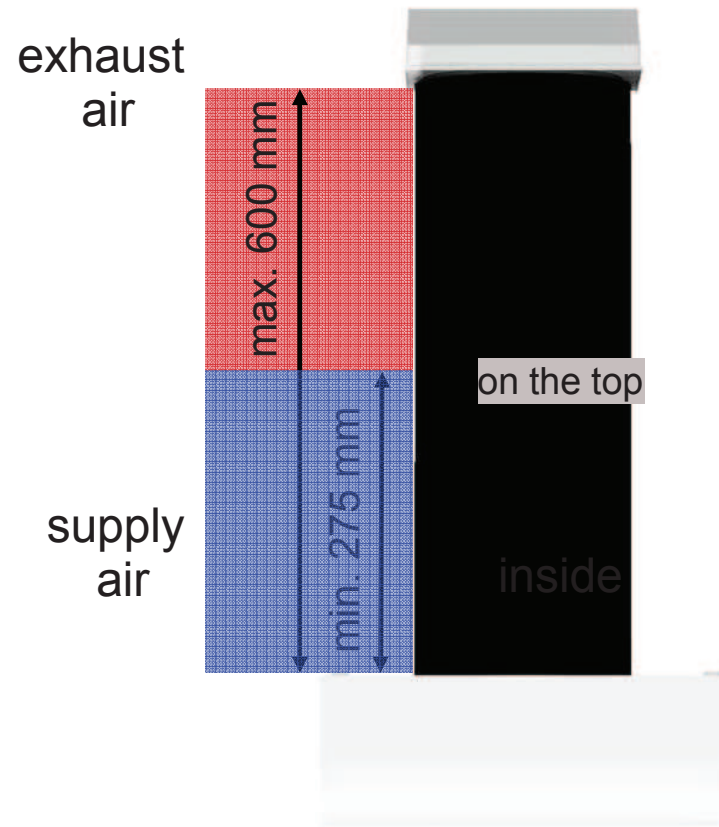


Series ComfoAir 70 / CA70

Wall thickness

Wall thickness

The minimum wall thickness is 275 mm.
The maximum wall thickness is 600 mm.



Series ComfoAir 70 / CA70

Dimensions

